

# Landscape Architecture Europe



Call for entries 2011-2013

## Please send in your best plans and projects

Submitted projects must have been designed or completed in the period from 1 January 2011 to 31 December 2013. Priority will be given to plans that have been implemented and to strategic and research plans. The projects must be commissioned and be of landscape architectural interest, and may be designed by one or more professionals of any nationality and from any discipline.

We particularly welcome projects that contribute to the expanded agenda of landscape architecture in Europe, redefining the playground of creative practice where society, politics, ecology and economy meet, at micro or macro scale, long term or ephemeral. We are also interested in receiving proposals from the fields of strategic, social and ecological design and from the arts that explore design innovation in the making and shaping of all kinds of spaces, public and private, urban and rural, local and global.

Individuals may submit a maximum of three projects. Entries must consist of no more than 6 A4 pages of text (in English), drawings, images and photographs. Please submit these by email (as a pdf file, maximum 12 MB). A project data form must be submitted separately (as a pdf file). The entry fee is € 50 for the first entry and € 40 each for subsequent entries. Each participant will receive one LAE book free of charge.

More information and a project data form can be downloaded from the website [www.landscapearchitectureeurope.com](http://www.landscapearchitectureeurope.com). A selection jury will select projects for inclusion in the book from those submitted. Authors of selected projects will be asked to provide comprehensive material in printable high-quality formats and recent, royalty-free photographs.

**Closing date** 1 December 2013

**Please send your entry by email to**  
[entry@landscapearchitectureeurope.com](mailto:entry@landscapearchitectureeurope.com)

### Board of the LAE Foundation

Michael van Gessel (chair), Amsterdam (NL)  
Fritz Auweck, Munich (D)  
Maria Goula, Barcelona (ES)  
Kathryn Moore, Birmingham (GB)

### Selection jury

Paolo Bürgi (chair), Camorino (CH)  
Monika Gora, Malmö (SE)  
Jandirk Hoekstra, Amsterdam (NL)  
Thierry Kandjee, Paris/Brussels (F/BE)  
Laura Zampieri, Marghera (I)

### Editorial board

Lisa Diedrich (editor-in-chief), Munich/Malmö (D/SE)  
Jessica Bridger, Berlin (D)  
Mark Hendriks, Utrecht (NL)  
Claudia Moll, Zurich (CH)

### Secretariat and production

LAE Landscape Architecture Europe Foundation  
Schip van Blaauw, Generaal Foulkesweg 72  
NL-6703 BW Wageningen, The Netherlands  
Harry Harsema (head of production),  
Daphne de Bruijn  
Mark Hendriks  
Anne Marie Roetgerink, Wageningen (NL)  
[www.landscapearchitectureeurope.com](http://www.landscapearchitectureeurope.com)

### For further information

[www.landscapearchitectureeurope.com](http://www.landscapearchitectureeurope.com)

Landscape Architecture Europe (LAE) is a foundation that seeks to enhance the dialogue in landscape architecture on a European level by publishing a triennial yearbook. Produced for the LAE Foundation and the European section of the International Federation of Landscape Architecture (IFLA Europe), the books aspire to be the definitive critical review of the state of the art of European landscape architecture.

The first book, *Fieldwork*, was published in 2006 and explores the tendency in Europe for new urban forms built on former agricultural land to make use of the patterns and land forms created by the agricultural land uses. The second book, *On Site* (2009), explores attitudes to place or locus, given that in Europe function and form are generally derived from the site and the landscape architect's sensitivity to its intrinsic geographical and historical characteristics and processes. The third book, *In Touch* (2012), received the DAM Award for 'Best Book on Architecture 2012'. The book argues that landscape architects in Europe build on a common horizon of understanding and yet produce quality works of very different expression and style. Like the first two books, it discusses outstanding projects created within the European mindset. It dives below the surface of forms in an attempt to uncover the common values that bind European design work – and which are continuously evolving. The fourth book will again observe the current world views and corresponding design approaches in European landscape architecture. It is now entering the production phase and will be published at the beginning of 2015.

As always, an independent jury of practicing landscape architects from different European countries will select the projects and a team of experienced European design critics will structure the book and write the texts.

# Please send in your best plans and projects

### Landscape Architecture Europe – *Fieldwork*

264 pages, over 500 illustrations, format 24 x 30 cm, hard cover;  
language versions in English (ISBN 978-3-7643-8950-5),  
German (ISBN 978-3-7643-8949-9), Spanish (ISBN 978-84-252-2306-8),  
French (ISBN 978-2-7427-8294-9) and Dutch (ISBN 978-90-75271-409)

### Landscape Architecture Europe – *On Site*

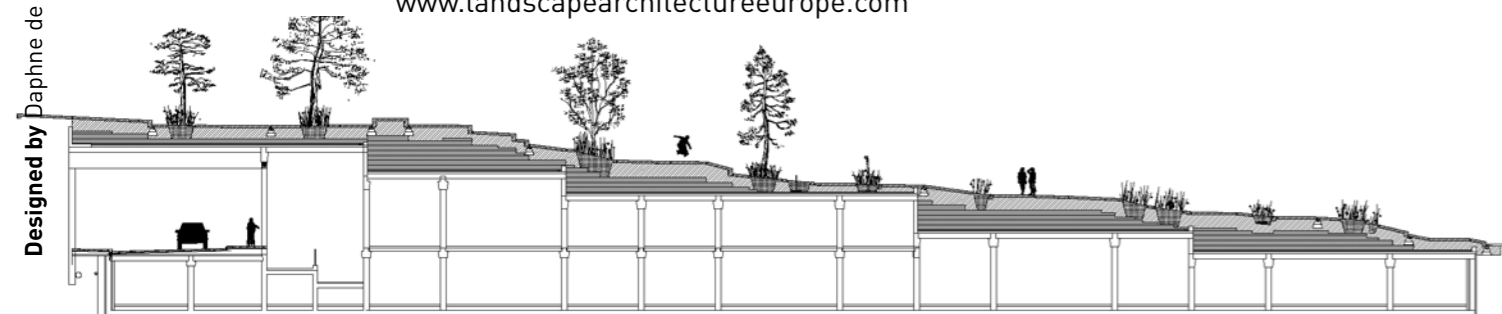
264 pages, over 500 illustrations, format 24 x 30 cm, hard cover;  
language versions in English (ISBN 978-3-7643-8950-5),  
German (ISBN 978-3-7643-8949-9), Spanish (ISBN 978-84-252-2306-8),  
French (ISBN 978-2-7427-8294-9) and Dutch (ISBN 978-90-75271-409)

### Landscape Architecture Europe – *In Touch*

264 pages, over 500 illustrations, format 22 x 28,5 cm, hard cover,  
English (ISBN 978-90-75271-80-5)

Book orders at a special price for members of IFLA Europe, ECLAS and contributors through the LAE Foundation: [info@landscapearchitectureeurope.com](mailto:info@landscapearchitectureeurope.com)

LAE Landscape Architecture Europe Foundation  
Schip van Blaauw, Generaal Foulkesweg 72  
NL-6703 BW Wageningen, The Netherlands



# Triennial of contemporary European landscape architecture



- ▶ **City Dune [DK]**  
SLA
- ◀ **Strubben Kniphorstbosch [NL]**  
Strootman Landschapsarchitecten
- ▼ **Cap de Creus [ES]**  
Estudi Martí Franch and Ardevols Associats



- ▲ **Private garden in Begur [ES]**  
Bet Figueras
- ▶ **Hardegg residential area [CH]**  
Rotzler Krebs
- ▼ **Seljord lake sites [N]**  
Rintala Eggertson, Feste and Springer



- ▲ **Tagus cycle track [P]**  
Global Arquitectura Paisagista and P06
- ▲ **Wadden Coast landscape vision [NL]**  
Buro Harro
- ▼ **Lettenviadukt [CH]**  
Schweingruber Zulauf
- ▼ **Funenpark [NL]**  
Landlab

